

ASL II Syllabus
 2017 – 2018
 Instructor: Fredrick Stamps, M.Ed.
 Email: mrstamps@edisonhs.org
 Cell Phone: 503-267-9441

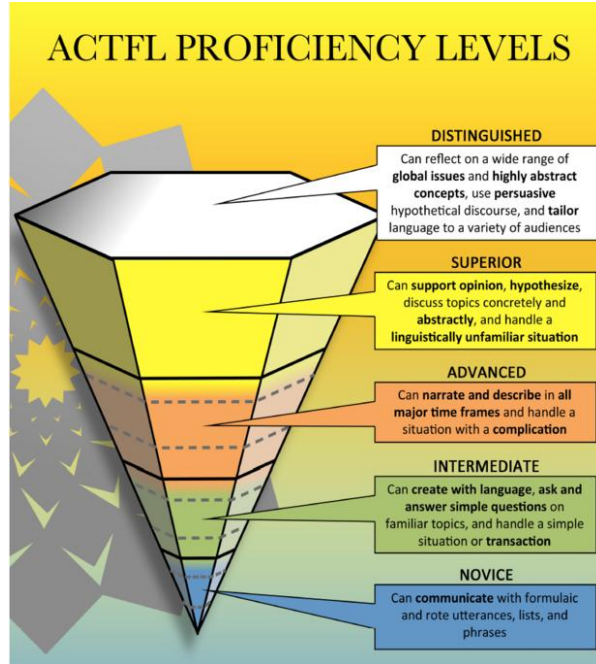
Course Description

This is an intensive, midlevel course in American Sign Language and Deaf culture. Emphasis is placed on further developing basic conversational fluency through student-focused Comprehensible Input. Attendance to at least two Deaf community events is required.

Student Learning Outcomes

Upon completion of this course, students will be able to:

- Demonstrate understanding and use of temporal inflection, directional aspect, indexing, role shifting, classifiers, and topic-comment structure in ASL
- Explain and analyze the fundamental aspects of ASL poetry and interpret one song into ASL
- Demonstrate fluency at the ACTFL Intermediate Mid level, that is, create original sentences in ASL to hold simple conversations in informal, familiar situations and be understood by a sympathetic addressee

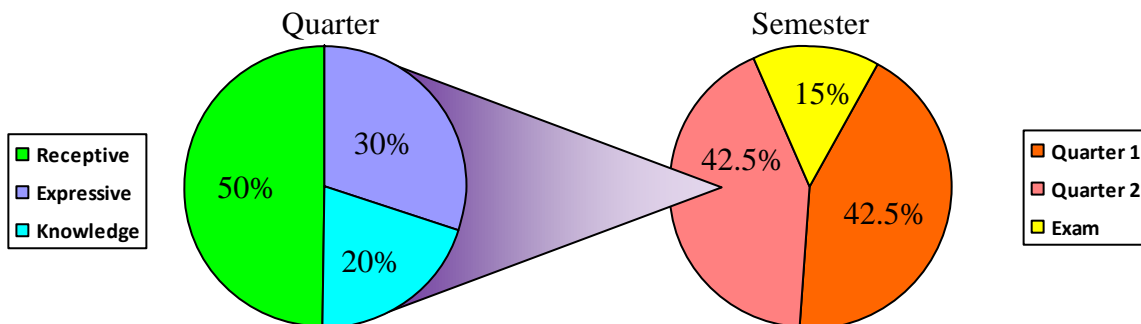


Online Text

- tobermorey.com: homework assignments and course readings are posted here

Learning Assessments (Grading)

Grade Weighting: Instead of calculating grades in weighted categories such as “homework”, “test/quizzes”, or “in-class work”, grades will reflect as much as possible students' skill development in the language based on assignments that measure their



comprehension and production of the language:

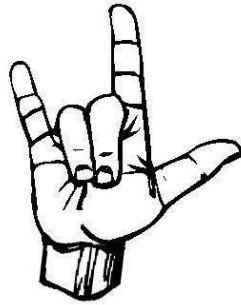
- Receptive Skills: Assignments that measure comprehension of the language
- Expressive Skills: Assignments that measure ability to produce the language
- Knowledge: Assignments that allow students to demonstrate knowledge of the language and culture and to reflect on their learning

Unlike Jesuit grades online, which are cumulative leading up the semester grade, quarter grades for Edison classes as reported online are averaged together for semester grades.

Timeliness: Late work is only worth a maximum of 50%. Late assignments can be turned in for credit up to two weeks after they are due. Homework assignments are due when collected in class, NOT at the end of the school day. Homework assignments should be emailed or printed PRIOR to students coming to class; homework assignments done or completed during the class period they are due are late.

This course uses a typical grading scale:

A+	97% - 100%
A	93% - 96%
A-	90% - 92%
B+	87% - 89%
B	83% - 86%
B-	80% - 82%
C+	77% - 79%
C	73% - 76%
C-	70% - 72%
D+	67% - 69%
D	63% - 66%
D-	60% - 62%
F	0% - 59%



If a student is absent, he or she is responsible for checking what assignments are due. Students have the same number of class days missed to make up assignments before the assignments are late.

Students may turn in revised assignments up to two weeks after they are due. Students cannot retake midterm exams or final exams.

Curriculum

This course uses both targeted instruction (with topics covered listed on the course website) and non-targeted instruction focusing on student-centered Comprehensible Input.

